



# Christ Memorial Presbyterian Church

***January 16, 2022 10:30 a.m.***

## Order of Worship

**\*\***indicates to stand as you are able.

### **Prelude**

*Send the Light*

arr. M. White

Psalm 43:3: *O send out your light and your truth; let them lead me; let them bring me to your holy hill  
and to your dwelling.*

"There's a call comes ringing o'er the restless wave, "Send the light! Send the light!" There are souls to rescue,  
there are souls to save, send the light! Send the light! Send the light, the blessed gospel light; let it shine from  
shore to shore! Send the light the blessed gospel light; let it shine forevermore!"

(words and music (tune McCabe) are by C. Gabriel, 1890; words and music are public domain)

(this piano solo: Lilienas Publishing Co., 1990)

### **Introit**

*Surely the Presence of the Lord*  
(see insert)

### **Welcome and Announcements**

### **Minute for Mission**

### **Passing of the Peace (L: Leader; P: People)**

L: The peace of Christ be with you.

**P: And also with you.**

### **\*\*Call to Worship**

Tom Engle

L: How precious is the steadfast love of God.

**P: All people may take refuge in the shadow of God's embrace.**

L: Christ is the fountain of life.

**P: In Christ we behold the Light of God.**

L: Let us worship God!

### **\*\*Hymn - 662**

*Christ, Whose Glory Fills the Skies*

### **\*\*Silent Prayer of Confession**

### **\*\*Common Prayer of Confession**

**Almighty God, we confess that we have been led astray by the idols of our world. We have depended on our possessions and have not placed our trust in your grace. We have carelessly consumed the gifts you offer and have failed to be faithful stewards of the earth's resources. We have sought security in the might of the sword rather than the strength of your Holy Spirit. Forgive us, we pray. Lead us to true repentance that we may serve you faithfully. Through Christ we pray. Amen.**

### **\*\*Assurance of Pardon**

L: Friends, this is the Good News of the Gospel...

**P: ...in Jesus Christ we are forgiven. Thanks be to God!**

**\*\*Response – 515**

*I Come with Joy*  
I come with joy, a child of God,  
forgiven, loved, and free,  
the life of Jesus to recall,  
in love laid down for me,  
in love laid down for me.

**Moment with Children**

Sarah Trodden

**Ordination and Installation of New Officers**

**Word in Music**

*Shed a Little Light*  
Scott Hoffman, soloist

by James Taylor; arr. G. Jasperse

Matthew 5:14-16: *"You are the light of the world. A city built on a hill cannot be hid. No one after lighting a lamp puts it under the bushel basket, but on the lampstand, and it gives light to all in the house. In the same way, let your light shine before others, so that they may see your good works and give glory to your Father in heaven."*

Chorus: "Shed a little light, oh Lord, so that we can see. Just a little light, oh Lord. Wanna stand it on up, stand it on up, oh Lord. Wanna walk it on down. Shed a little light, oh Lord."

(Country Road Music, Inc. 1991; this arrangement: Alfred Music Publishing Co., 2013)

**Prayer for Illumination**

**Scriptures**

Isaiah 62:1-5  
John 2:1-11

L: The Word of the Lord.

**P: Thanks be to God.**

**Sermon**

A Reception to Remember

Rev. Scott Hoffman

**\*\*Hymn - 156**

*Sing of God Made Manifest*

**Invitation to Offering**

*There are numerous ways to give to the work of CMPC. Offering plates will be located near the exits of the sanctuary for checks or cash to be left today. Cards with a QR code that will direct you to our online giving page are located in the pew racks. Donations can always be mailed to the church at any time using the address on the back page of the bulletin. Thank you for your gift!*

## Offertory

### *Siyahamba (We Are Marching In the Light of God)*

arr. J. Behnke

John 8: 12: *Then Jesus again spoke to them, saying, "I am the Light of the world; he who follows me will not walk in the darkness, but will have the Light of life."*

"We are marching in the light of God, we are marching in the light of God. We are marching in the light of God, we are marching in the light of God. We are marching O-oh. We are marching in the light of God. We are marching O-oh. We are marching in the light of God."

"We are moving in the power of God, we are moving in the power of God. We are moving in the power of God, we are moving in the power of God. We are moving O-oh. We are moving in the power of God. We are moving O-oh. We are moving in the power of God."

(based on South African Freedom Song)

(Peace of Music Publishing AB, Walton Music Corp., a division of GIA Publications, Inc., 1984)

(this organ solo: Hope Publishing Co., 1999)

## **\*\*Doxology - 606**

### *Praise God from Whom All Blessings Flow*

## **Prayers of Thanksgiving with The Lord's Prayer (using "debts")**

## **\*\*Hymn – 649**

### *Our God, Our Help in Ages Past*

## **\*\*Benediction**

## Postlude

### *Send the Light*

arr. M. McDonald

Ephesians 5:8: *For you were once darkness, but now you are light in the Lord. Live as children of light.*

"Let us pray that grace may ev'rywhere abound, "Send the light! Send the light!" And a Christ-like spirit ev'rywhere be found, send the light! Send the light! Send the light, the blessed gospel light; let it shine from shore to shore! Send the light the blessed gospel light; let it shine forevermore!"

(words and music (tune McCabe) are by C. Gabriel, 1890; words and music are public domain)

(this piano solo: Hal Leonard Corporation, 2010)

Thank you to Neil Danzig and Allen Exner for providing audio support this week!  
Thank you to Kofi Akuoko for operating the sanctuary cameras this week!

CCLI Copyright License #1280964; streaming license #20314021  
SongSelect Premium license # RG20-1496988  
One License # A-719136

## Announcements and Upcoming Events

## Sunday Experience

Sunday Experience will be on hiatus until further notice.



### Mission & Local Outreach activities for December

Please see our blog post to read about the many M&LO activities



## Child Protection Training

Sunday, January 30, 2022 @ 12:00

Mark your calendars! This training is for all adults who work with children and youth, but have not yet attended the Child Protection training at CMPC. If you attended and were trained at the January 2020 child protection training, you do not need to attend this unless you'd like a refresher. This will be an in person and virtual training. We will switch to entirely virtual if needed. Zoom link to come. Questions: please contact Lindsey Kim at [lindseyathorne@yahoo.com](mailto:lindseyathorne@yahoo.com). RSVP here:



## Talks on Race & Racism

In 2020 the Christian Education committee hosted a discussion of Race & Racism for our congregation. Approximately 48 people participated in at least one discussion with an average of 25 people attending each time. After this series ended, CE polled participants to determine the next steps in moving forward with this discussion. Participants indicated a preference for an outside speaker. Pastor Scott pursued a few possibilities for organizations to facilitate this formal discussion and then recommended The Center, a mission organization of the Baltimore Presbytery. The CE committee has arranged for The Center to provide a program that will lead the next part of this discussion. All members of our congregation are invited to participate in this program.

The Center will lead sessions on January 23, January 30, February 20, and February 27 by Zoom. Each of the four sessions will meet from 7:00pm to 8:30pm. The purpose of the program is to learn how to engage responsibly in our community, with a particular focus on antiracist practices.

Register in advance for this meeting:



Contact Debbie O'Neal (oneal04@aol.com) if you have questions.

### **Valentines for College Students**

The Care & Wellness Committee likes to keep in touch with the college students in our congregation. We would like to send them a Valentine's card to let them know that we are thinking of them. If you have a student in college, graduate school, technical school, or professional school, please send their name and address to Kris Bloom (kcbloom@verizon.net), even if they are living at home, by Sunday, January 30, 2022. If you sent their names in the Fall, please send again to verify that they are still at the same address. Please help us to stay in touch! Thank you!



### **Request for Greeting Cards**

The Care & Wellness Committee sends Birthday Wishes, Thinking of You, Get Well, and Sympathy cards to members of the church on a regular basis. We use 40+ birthday cards almost every month and 10-20 other cards. If you have any cards listed above or plain blank cards that you would like to donate to this worthwhile ministry, please drop them off to the church office. Thank you in advance for your kindness.

### **Campaign Updates**

On December 5 we were able to announce good news about our third capital campaign. The numbers have increased since that Sunday, and so we are sharing them below. Thank you again to everyone who participated. Your leadership, pledges and prayers will enable Christ Memorial Presbyterian Church to continue sharing its mission and ministry with the community and the world. We are so blessed!

2022 Operating Campaign

86 households pledged \$361,026

3rd Capital Campaign

83 households pledge \$1,385,810

If you would still like to participate, please contact the church office for a pledge card or pledge online (see below for more information).

### **Online Pledging Comes to CMPC**

The capability to pledge online through the CMPC Bridge is now available for the annual Operating Budget, also known as the General Fund, and the "Faithfulness Received, Faithfulness Returned" ministry expansion capital campaign. Please complete only one of the online "pledge card" or a paper pledge card; do not complete both. Detailed instructions on how to pledge online are available on the CMPC blog. If you have any questions, please contact Joyce Danzig at joyce.danzig@gmail.com.

# Ordination and Installation of Officers

## Sentences of Scripture

L: There are varieties of gifts, but it is the same Spirit who gives them

**P: There are different ways of serving God, but it is the same Lord who is served**

L: God works through each person in a unique way, but it is God's purpose that is accomplished

**P: To each is given a gift of the Spirit to be used for the common good.**

L: Together we are the body of Christ, and individually members of it

## Profession of Faith

L: Trusting in the Gracious mercy of God, do you turn from the ways of sin and renounce evil and its power in the world?

**P: I do.**

L: Do you turn to Jesus Christ and accept him as Lord and Savior, trusting in his grace and love?

**P: I do.**

L: Will you be Christ's faithful disciple, obeying his Word and showing his love?

**P: I will, with God's help**

L: With the whole church, let us confess our faith. Do you believe in God the Father?

**P: I believe in God, the Father almighty, maker of heaven and earth.**

L: Do you believe in Jesus Christ, the Son of God?

**P: I believe in Jesus Christ, God's only Son, our Lord, who was conceived by the Holy Spirit, born of the Virgin Mary, suffered under Pontius Pilate, was crucified, died, and was buried; he descended to the dead. On the third day he rose again; he ascended into heaven, he is seated at the right hand of the Father, and he will come to judge the living and the dead.**

L: Do you believe in God the Holy Spirit?

**P: I believe in the Holy Spirit, the holy catholic church, the communion of saints, the forgiveness of sins, the resurrection of the body, and the life everlasting. Amen.**

## Questions of the Congregation

L: Do we, the members of the church, accept these men and women as deacons and elders, chosen by God through the voice of this congregation to lead us in the way of Jesus Christ?

**P: We do.**

L: Do we agree to encourage them, to respect their decisions, and to follow as they guide us, serving Jesus Christ who alone is Head of the Church?

**P: We do.**

# Surely The Presence Of The Lord

Words and Music by  
Lanny Wolfe

♩ = 66

## CHORUS

D F#m Gmaj<sup>9</sup> Em Em<sup>7</sup>

Sure - ly the pres - ence of the Lord is in this place, I can feel His might - y

6 A<sup>7</sup> D G/D A<sup>7</sup> D F#m

pow - er and His grace. I can hear the brush of an - gel's wings I see

11 Gmaj<sup>9</sup> Em Em<sup>7</sup> A<sup>7</sup> Em A<sup>7</sup> D

glo - ry on each face; Sure - ly the pres - ence of the Lord is in this place.

# Christ, Whose Glory Fills the Skies 662



1 Christ, whose glo - ry fills the skies; Christ, the true, the on - ly light;  
 2 Dark and cheer-less is the morn un - ac - com - panied by thee;  
 3 Vis - it then this soul of mine; pierce the gloom of sin and grief;



Sun of Righ-teous-ness, a - rise; tri-umph o'er the shades of night;  
 joy-less is the day's re-turn till thy mer-cy's beams I see;  
 fill me, ra - dian - cy di-vine; scat-ter all my un - be - lief;



Day-spring from on high, be near; Day-star, in my heart ap - pear.  
 till they in - ward light im - part, cheer my eyes and warm my heart.  
 more and more thy - self dis - play, shin - ing to the per - fect day.

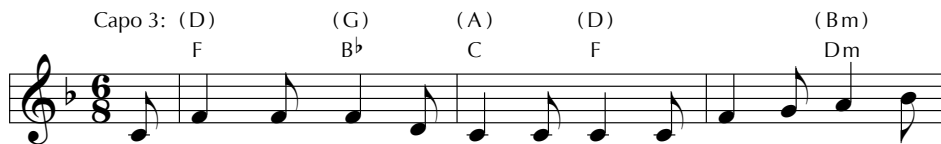


This well-crafted morning hymn opens by celebrating daylight as an image of Christ, the true Light, then ponders life without light, and culminates in a prayer for inward light. The tune's name honors its German roots: Ratisbon is the former English name for Regensburg.

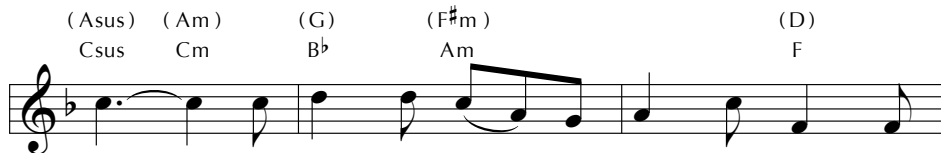


# I Come with Joy

515



1 I come with joy, a child of God, for - giv - en, loved, and  
2 I come with Chris-tians far and near to find, as all are  
3 As Christ breaks bread and bids us share, each proud di - vi - sion  
4 The Spir - it of the ris - en Christ, un - seen, but ev - er  
5 To - geth - er met, to - geth - er bound by all that God has



free, the life of Je - sus to re - call, in  
fed, the new com - mu - ni - ty of love in  
ends. The love that made us, makes us one, and  
near, is in such friend - ship bet - ter known, a -  
done, we'll go with joy, to give the world the



love laid down for me, in love laid down for me.  
Christ's com-mu - nion bread, in Christ's com-mu - nion bread.  
strang - ers now are friends, and strang - ers now are friends.  
live a - mong us here, a - live a - mong us here.  
love that makes us one, the love that makes us one.

*Guitar chords do not correspond with keyboard harmony.*

This text affirms that Christian unity is not achievement but gift, one renewed each time we gather for the Lord's Supper. Each of us enters as an "I" and leaves as part of "we." The unadorned language of this text is well matched to the simple shape note tune that sets it here.

# Sing of God Made Manifest 156

1 Sing of God made man - i-fest in a child ro - bust and blest,  
 2 Sing of God made man - i-fest when at Jor - dan John con-fessed,  
 3 Sing of God made man - i-fest when Christ came as wed - ding guest  
 4 Sing of God made man - i-fest on the cloud-capped moun-tain's crest,

to whose home in Beth - le - hem where a star had guid-ed them,  
 "I should be bap-tized by you, but your bid-ding I will do."  
 and at Ca - na gave a sign, turn-ing wa - ter in - to wine;  
 where the law and proph - ets waned so that Christ a - lone re-mained:

ma - gi came and gifts un-bound, signs mys - te - rious and pro-found:  
 Then from heaven a dou - ble sign—dove-like Spir - it, voice di - vine—  
 fur - ther still was love re-vealed as he taught, for-gave, and healed,  
 glimpse of glo - ry, pledge of grace, given as Je - sus set his face

myrrh and frank-in-cense and gold grave and God and king fore - told.  
 hailed the true A - noint - ed One: "This is my be - lov - ed Son."  
 bring - ing light and life to all who would lis-ten to God's call.  
 towards the wait-ing cross and grave, sign of hope that God would save.

"Epiphany" means "manifestation" or "showing forth," and this text cites key disclosures of Jesus as Messiah: the coming of the Magi, his baptism by John the Baptist, the wedding at Cana. All are summed up in the Transfiguration, recalled on the Last Sunday after the Epiphany.

# 606 Praise God, from Whom All Blessings Flow

## Doxology

Praise God, from whom all bless-ings flow; praise \*him, all crea-tures

here be-low; praise \*him a-bove, ye heav-en-ly host; praise

Fa-ther, Son, and Ho-ly Ghost. A-men.

*\*Or "God"*

## 687 Our God, Our Help in Ages Past

(Psalm 90)

1 Our God, our help in a - ges past, our  
 2 Be - neath the shad - ow of thy throne thy  
 3 Be - fore the hills in or - der stood, or  
 4 A thou - sand a - ges in thy sight are

hope for years to come, our shel - ter from the  
 saints have dwelt se - cure; suf - fi - cient is thine  
 earth re - ceived its frame, from ev - er - last - ing  
 like an eve - ning gone, short as the watch that

storm - y blast, and our e - ter - nal home:  
 arm a - lone, and our de - fense is sure.  
 thou art God, to end - less years the same.  
 ends the night be - fore the ris - ing sun.

5 Time, like an ever rolling stream,  
 bears all our years away;  
 they fly forgotten, as a dream  
 dies at the opening day.

6 Our God, our help in ages past,  
 our hope for years to come,  
 be thou our guard while life shall last,  
 and our eternal home.

Many people sing this hymn unaware that it paraphrases Psalm 90, partly because this text speaks so immediately to the human condition. Since the middle of the 19th century, it has usually been joined to this tune named for the London parish where the composer was organist.



# Christ Memorial Christian Preschool

## DECEMBER

*For Unto Us a Child is Born, Unto us a*

*Son is Given. - Isaiah 9:6*



The month of December is filled with the wonder of Christmas at Christ Memorial Christian Preschool. Our children have the opportunity to learn about the birth of Jesus through lessons, songs and crafts. Pastor Scott joined us for a very special Bible time to learn the Christmas Story.

Our children learned many wonderful traditional Christmas carols, including Go Tell It On the Mountain and Away in a Manger. At the end of the month we invited all the preschool families to join us for a celebration of Baby Jesus' birth. The children sang songs and shared the Nativity story with their families.

It was so nice to welcome the families into the preschool even if it was just for a short time. It was a wonderful day of fellowship between the teachers, children and preschool families.

***Happy New Year from the Teachers of Christ Memorial!***





## CHURCHES RESPOND. HOMELESSNESS ENDS. HOPE BEGINS.

Bridge of Hope believes that the Church has a unique opportunity and role in ending family homelessness. No one should face homelessness alone. In our program we build a support system for a family facing homelessness. We call this a Neighborhood of Support- a 3-way partnership between a family, a case manager and a group of 5 to 10 Neighboring Volunteers from a Christian faith community.

### How Can I Help a Family Facing Homelessness?

#### Become a Neighboring Volunteer!



##### Open my eyes

Learn about and gain a new perspective on the issues surrounding family homelessness.



##### Open my heart

Give support, offer encouragement and build a relationship with a family facing homelessness.



##### Open my hands

Offer tangible, practical supports such as helping to find housing, assisting with rides or childcare, providing meals, or being a listening ear.



##### Open doors

Use your personal and professional networks to support a family's long term success.

**BE PART OF THE VITAL LINK TO HELPING END HOMELESSNESS!**



## CHURCHES RESPOND. HOMELESSNESS ENDS. HOPE BEGINS.

Bridge of Hope believes that the Church has a unique opportunity and role in ending family homelessness. No one should face homelessness alone. In our program we build a support system for a family facing homelessness. We call this a Neighborhood of Support- a 3-way partnership between a family, a case manager and a group of 5 to 10 Neighboring Volunteers from a Christian faith community.

### How Can I Help a Family Facing Homelessness?

#### Become a Neighboring Volunteer!



##### Open my eyes

Learn about and gain a new perspective on the issues surrounding family homelessness.



##### Open my heart

Give support, offer encouragement and build a relationship with a family facing homelessness.



##### Open my hands

Offer tangible, practical supports such as helping to find housing, assisting with rides or childcare, providing meals, or being a listening ear.



##### Open doors

Use your personal and professional networks to support a family's long term success.

**BE PART OF THE VITAL LINK TO HELPING END HOMELESSNESS!**

### HOW DO I GET INVOLVED?

Bridge of Hope Greater Baltimore Region is looking to start a new Neighboring Volunteer Group at CMPC to work with a new family in need in the Howard County area. This will be the third Neighboring Volunteer group from CMPC to work with a Bridge of Hope family! If you are interested in learning more about this ministry program and/or becoming a Neighboring Volunteer at CMPC now, please complete the form below or contact

**Joy Lanier**, Program Director/Case Manager for Bridge of Hope Greater Baltimore Region

Email: [programdirector@greaterbaltimore.bridgeofhopeinc.org](mailto:programdirector@greaterbaltimore.bridgeofhopeinc.org)

Call: 410-690-6379

---

----- Complete this portion and drop in the offering plate -----

☐

I am interested in learning more about Bridge of Hope at CMPC.  
Please contact me with more information.

☐

I definitely want to participate as a Neighboring Volunteer.  
Please contact me now, as a new group is being formed!

Name: \_\_\_\_\_

Address: \_\_\_\_\_

Email: \_\_\_\_\_

Phone: \_\_\_\_\_ Cell: \_\_\_\_\_

### HOW DO I GET INVOLVED?

Bridge of Hope Greater Baltimore Region is looking to start a new Neighboring Volunteer Group at CMPC to work with a new family in need in the Howard County area. This will be the third Neighboring Volunteer group from CMPC to work with a Bridge of Hope family! If you are interested in learning more about this ministry program and/or becoming a Neighboring Volunteer at CMPC now, please complete the form below or contact

**Joy Lanier**, Program Director/Case Manager for Bridge of Hope Greater Baltimore Region

Email: [programdirector@greaterbaltimore.bridgeofhopeinc.org](mailto:programdirector@greaterbaltimore.bridgeofhopeinc.org)

Call: 410-690-6379

---

----- Complete this portion and drop in the offering plate -----

☐

I am interested in learning more about Bridge of Hope at CMPC.  
Please contact me with more information.

☐

I definitely want to participate as a Neighboring Volunteer.  
Please contact me now, as a new group is being formed!

Name: \_\_\_\_\_

Address: \_\_\_\_\_

Email: \_\_\_\_\_

Phone: \_\_\_\_\_ Cell: \_\_\_\_\_